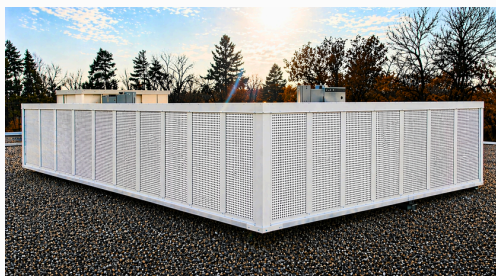
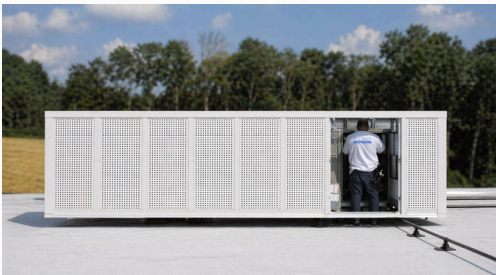


DIRECT ATTACHED SCREEN SYSTEM

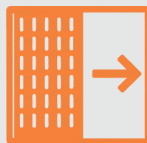
FLAT PERFORATED PANEL SHOWN



STATEMENT

When zoning codes or design guidelines require the concealment of unsightly rooftop equipment without roof penetrations, our Direct Attached Screen System provides the ideal solution. The system mounts directly to the cabinet of the HVAC unit—eliminating roof penetrations—while integrated sliding panels allow easy access for service and maintenance. These systems are suitable for both new construction and retrofit applications.

SCREEN HIGHLIGHTS



**SLIDING PANELS
FOR EASY ACCESS**



**BREATHABILITY
BUILT FOR AIR FLOW**



**WIND RESISTANCE
UP TO 225MPH**