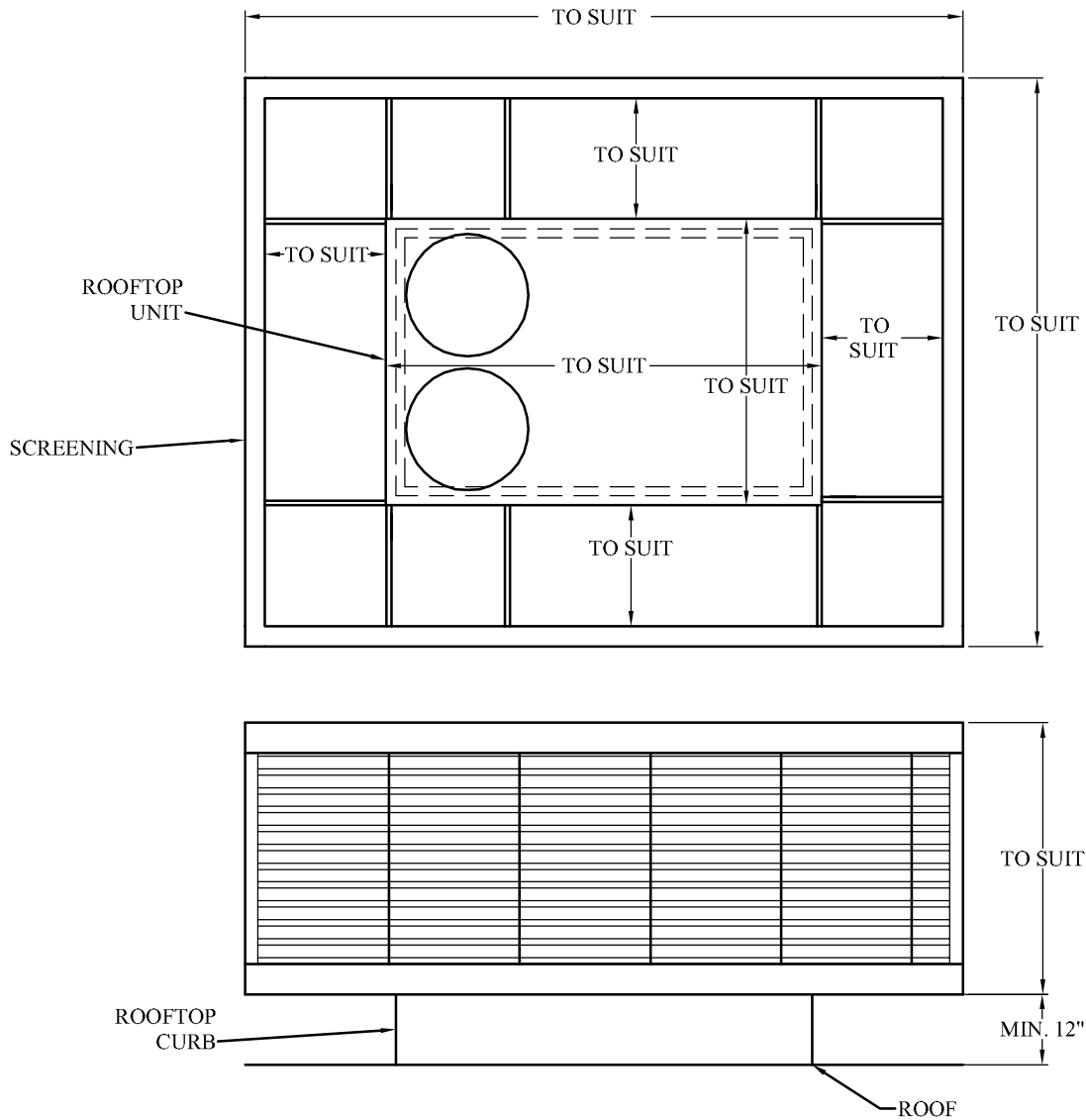




ARCHITECTURAL SCREENING SPECIFICATION - DIRECT ATTACHED SYSTEM - “HORIZONTAL RIB” SLIDING PANELS



The successful bidder shall supply Spinnaker Industries Direct Attached Screening Systems with “HORIZONTAL RIB” panels as selected by the Architect. The screening system shall be mounted directly to the mechanical equipment so that no roof penetrations will be required, or allowed. All panels shall be sliding style to provide access to all compartments for service and maintenance. The screening system shall be rated to withstand lateral forces developed due to wind speeds of 225mph and shall conform to the following standards, codes and references:

- American Society for Testing and Materials: ASTM B 221-96 - Aluminum and Aluminum Alloy Extruded Bars, Rods, Wire Profiles and Tubes.
- The Aluminum Association, Inc.: AA ADM-1516166 (1994) - Aluminum Design Manual.
- American Society of Civil Engineers: ASCE 7 - 95 - Minimum Design Loads for Buildings and Other Structures.
- The Florida Building Code: FBC 2020 - Evaluation of Wind and Seismic Forces and the design of connections.
- International Building Code: IBC 2021 - Evaluation of Wind and Seismic Forces and the design of connections.

The screening system shall come complete with galvanized steel out-riggers (min. thickness 0.062, 16 gauge), extruded aluminum tracks (min. thickness 0.050, 18 gauge), painted panels and top trim (min. thickness 0.030, 22 gauge), and stainless steel fasteners and mounting hardware. The paint shall be a powder polyester with a baked on finish that meets ASTM B-117-85 standard for 500 hour salt spray, ASTM D-3363-74 standard for H-2H pencil hardness, and ASTM D-3359-83 for adhesion.

It is the installers responsibility to verify all field conditions and unit accessories prior to fabrication and delivery. Any modifications required in the field must be approved by the manufacturer and all related costs shall be borne by the installing contractor.

For nationwide distribution and installation contact the following:

North American Enclosures, Inc., 2620 Regatta Drive, Suite 102, Las Vegas, NV. 89128

Web: www.northamericanenclosures.us

Ph: 888-308-5296

1171 Gorham Street, Newmarket, Ontario, Canada L3Y 8Y2

Tel: (416) 742-0598 Fax: (416) 742-4251

4846 Jennings Lane, Louisville, Kentucky, USA 40218

Tel: 1-800-932-6210 Fax: 1-800-903-7294